

Standard QD Bushings

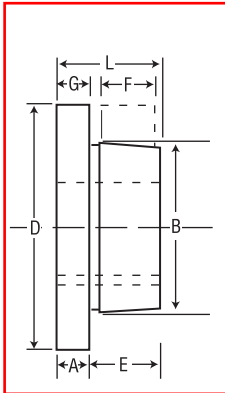


BUSHINGS

Bushing	Dimensions (Inches)								Cap Screws Required	Stock Bore Range			Set Screw Size	Average Weight (Approx.)
	A	B	D	E	F	G	L	Bolt Circle		Minimum	Maximum			
											Standard Keyway	Shallow Keyway		
JA	3/8	1.375	2	1/8	3/8	3/8	1 1/8	1.665	3-10 x 1	3/8	1	1 1/4	10-24	.9
SH	7/16	1.871	2 1/16	3/8	13/16	7/8	1 5/8	2 1/4	3-1/4 x 1 3/8	1/2	1 3/8	1 1/2	1/4	1
SDS	1/2	2.187	3 3/16	7/8	3/4	1/2	1 3/8	2 1/16	3-1/4 x 1 3/8	1/2	1 1/16	2	1/4	1
SD	1/2	2.187	3 3/16	1 1/16	1 1/4	1/2	1 3/8	2 1/16	3-1/4 x 1 3/8	1/2	1 1/16	1 3/8	1/4	1.5
SK	5/8	2.812	3 3/8	1 1/4	1 1/4	1/2	1 1/8	3 3/8	3-5/8 x 2	1/2	2 3/8	2 1/2	5/16	2
SF	5/8	3.125	4 3/8	1 1/2	1 1/4	1/2	2 1/8	3 3/8	3-5/8 x 2	1/2	2 3/8	2 3/8	5/16	3
E	3/4	3.834	6	1 3/8	1 3/8	1/2	2 3/8	5	3-1/2 x 2 3/8	3/4	2 3/8	3 1/2	3/8	10
F	13/16	4.437	6 3/8	2 1/16	2 1/2	3/8	3 3/8	5 3/8	3-3/8 x 3 3/8	1	3 3/8	3 3/8	1/2	11.5
J	1	5.148	7 3/4	3 1/2	3 3/8	3/8	4 1/2	6 3/4	3-3/8 x 4 1/2	1 1/8	3 3/8	4 1/2	3/8	18
M	1 1/4	6.500	9	5 1/2	5 3/8	3/8	6 3/4	7 3/8	4-3/4 x 6 3/4	1 3/8	4 3/8	5 1/2	3/4	37
N	1 1/2	7.000	10 3/4	6 3/8	6 3/4	1/2	8 3/8	8 3/8	4-1/2 x 8 3/8	2 1/8	5 3/8	6	3/4	57
P	1 3/4	8.250	11 3/4	7 3/8	7 3/4	1/2	9 3/8	10	4-1 x 9 3/8	2 3/8	5 3/8	7	7/8	120
W	2	10.437	15	9 3/8	9	1/2	11 3/8	12 3/4	4-1 1/2 x 11 3/8	4	7 1/2	8 1/2	1	250
S	3 3/4	12.125	17 3/4	12 1/2	12	3/4	15 3/8	15	5-1 1/4 x 15 3/8	6	8 3/4	10	1 1/4	400

Inch Bore

Bushing	Bores	Keyway
JA	3/8 - 7/8	NO K.W.
	1/2 - 1	STD.
	1 1/8 - 1 1/2	3/4 x 1/8
	1 3/8	1/2 x 1/8
SH	1/2 - 1 1/8	STD.
	1 1/8 - 1 1/2	3/8 x 1/8
	1 3/8 - 1 3/4	3/8 x 1/8
	1 5/8	NO K.W.
SDS	1/2 - 1 1/8	STD.
	1 1/8	3/8 x 3/8
	1 3/8	1/2 x 3/8
	1 5/8 - 1 3/4	1/2 x 3/8
SD	1/2 - 1 1/8	STD.
	1 1/8	3/8 x 3/8
	1 3/8	1/2 x 3/8
	1 5/8 - 1 3/4	1/2 x 3/8
SK	1/2 - 1 1/8	STD.
	1 1/8	3/8 x 3/8
	1 3/8	1/2 x 3/8
	1 5/8 - 1 3/4	1/2 x 3/8
SF	1/2 - 2 1/4	STD.
	2 3/8 - 2 1/2	3/8 x 3/8
	2 5/8 - 2 3/4	3/8 x 3/8
	2 7/8 - 2 3/4	3/8 x 3/8
E	1/2 - 2 1/4	STD.
	2 3/8 - 3 1/4	3/8 x 3/8
	3 3/8 - 3 1/2	3/8 x 3/8
	3 5/8	3/8 x 3/8
F	1 - 3 3/8	STD.
	3 3/8 - 3 3/4	3/8 x 3/8
	3 7/8 - 3 15/16	1 x 1/4
	4	NONE
J	1 1/4 - 3 3/4	STD.
	3 3/8 - 4 1/2	1 x 1/4
M	2 - 4 3/4	STD.
	4 1/8 - 5 1/2	1 1/4 x 1/4
N	2 1/8 - 5	STD.
	5 1/8 - 5 1/2	1 1/4 x 1/4
	5 3/8 - 6	1 1/2 x 1/4
P	2 1/8 - 5 15/16	STD.
	6 - 6 1/2	1 1/2 x 1/4
	6 3/8 - 7	1 3/4 x 1/4
W	4 - 7 1/2	STD.
	7 1/8 - 8 1/2	2 x 1/4



★Important — The metric system does not refer to keyseat or keyway dimensions as does the English system; instead dimensions are given for the key itself which is rectangular in shape, not square as in the English system.

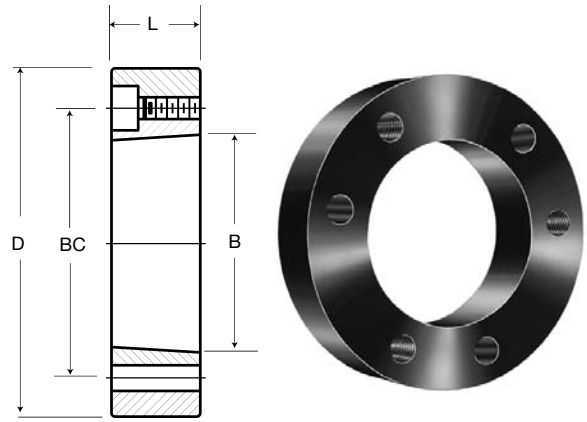
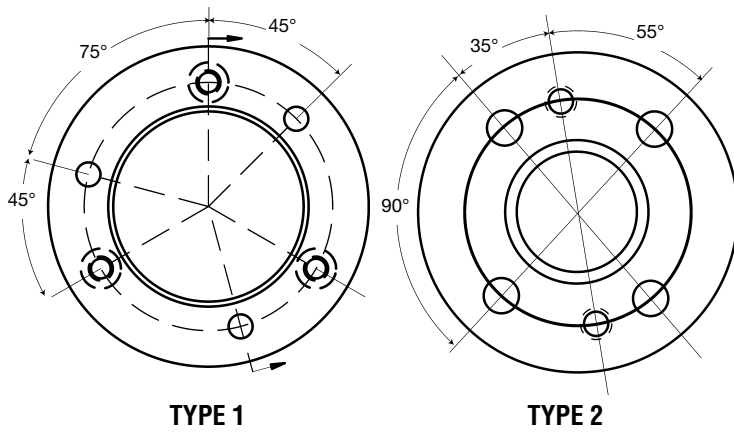
NOTE: .03937" = 1mm
 Ex — 24 mm = 0.94488"

TO ORDER:
 SH 24 mm

Millimeter Bore

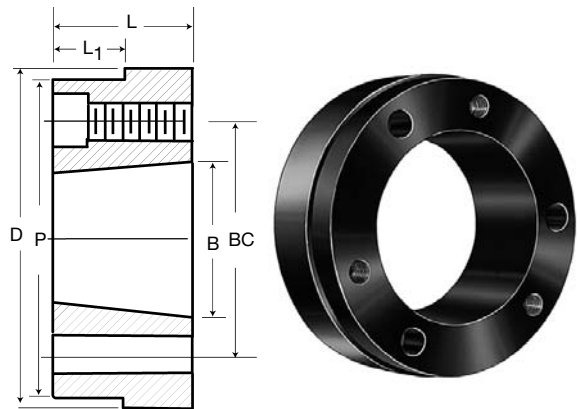
Bushing	Bore MM	Key★ WXT
SH	24, 25 28, 30	8x7
	32, 35	10x8
SDS	24, 25 28, 30	8x7
	32, 35 38	10x8
	40, 42	12x8
SD	24, 25 28, 30	8x7
	32, 35 38	10x8
	40, 42	12x8
SK	24, 25 28, 30	8x7
	32, 35 38	10x8
	40, 42 48, 50 55	12x8 14x9 16x10
SF	28, 30 32, 35 38	8x7 10x8
	40, 42 48, 50 55 60	12x8 14x9 16x10 18x11
	35, 38 40, 42 48, 50 55	10x8 12x8 14x9 16x10
E	40, 42 48, 50 55	12x8 14x9 16x10
	60, 65 70, 75	18x11 20x12
	48, 50 55	14x9 16x10
F	60, 65 70, 75 80, 85 90	18x11 20x12 22x14 25x14
	50 55 60, 65 70, 75	14x9 16x10 18x11 20x12
	80, 85 90, 95 100	22x14 25x14 28x16

Keystock provided for nonstandard keyways.



Martin QD weld-on hubs are suitable for use in many applications, such as welding to plate steel sprockets.

Weld-on hubs are made of steel, drilled tapped and taper bored for QD bushings



WELD-ON HUB TYPE QD

QD Weld-On Hubs

Catalog Number	Dimensions — Inches						Type Drilling	Weight Pounds	Mounting
	D★	L	B	P	L ₁	BC			
JA-A	2.250	5/16	1.375	2.125	3/16	1 1/2	1	.4	STD or Reverse Mount
SH-A	3.000	5/16	1.871	—	—	2 1/4	1	1	
SDS-A	3.500	3/4	2.188	—	—	2 1/16	1	1 1/4	
SK-A	4.375	1 1/4	2.813	—	—	3 3/16	1	3	
SF-A	5.000	1 1/4	3.125	—	—	3 3/8	1	4	
E-A	6.250	1 1/2	3.832	—	—	5	1	9	STD Mount Only
F-A	7.000	2 1/2	4.437	—	—	5 5/8	1	16	
J-A	7.750	3 3/16	5.140	—	—	6 1/4	1	22.5	
M-A	9.500	5 5/16	6.494	9.250	3 3/16	7 1/2	2	50	
N-A	10.500	6 1/4	6.990	10.250	4 1/2	8 1/2	2	75	
P-A	13.000	7 1/2	8.240	—	—	10	2	155	STD Mount Only
W-A	15.500	9	10.437	—	—	12 3/4	2	300	
S-A	19.500	12	12.125	18.75	7.5	15	2	558	

★Tolerance of D Dimension
 JA-A Thru J-A = (+.000-.002)
 M-A Thru S-A = (+.000-.003)